

World Natural Heritage Amami-Oshima, where nature's blessings are cherished

World of Oshima tsumugi, source of Japan's prized modern kimono Available for 1 - 3 people, estimated price per person: 2.88 mil. to 3.89 mil. yen



◇ Comfortable air travel

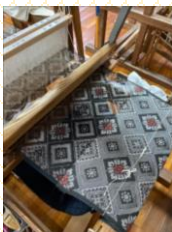
One-hour flight from Kagoshima Airport to Amami-Oshima, around 387 km to the south. Business jet option available for travel from Haneda Airport (Tokyo) and other departure points.

Day1



Highlight I: Visit weaving studio Oshima Tsumugi Museum.

Uncover the 1300-year history of Oshima tsumugi. Observe the production process, experience weaving, and enjoy herb dyeing using scarves of pure silk.



Bold patterns and sotetsu palm design.

◇ The tatsugo pattern, typical of Oshima tsumugi, is a geometric pattern inspired by the sotetsu palms that grow wild on Amami-Oshima. (Above) Dyeing using "getto" ginger.



Thida Moon, resort hotel

Two-night stay in a suite room at Thida Moon, a resort hotel run by a weaver of Oshima tsumugi. Approx. 10 minutes from Amami-Oshima Airport.

Amami-Oshima island remains a World Heritage-class wilderness area with a unique ecosystem. Within this remarkable setting is a tradition of kimono-making that is the envy of people around Japan - Oshima tsumugi.

Known for its unique dyeing and weaving techniques, Oshima tsumugi is an enchanting 100% silk fabric dyed with mud. It is regarded as one of the world's finest textiles and is the pinnacle of Japanese silk fabrics.

Light, supple, and holding an elegant sheen, Oshima tsumugi lends itself to the arts as well as to clothing and bedding.

Day2



◇ Highlight II: Guided introduction to Oshima tsumugi, led by a curator specializing in textiles. Kimono-fitting and photoshoot. Participants can also request a consultation with a local fabric designer who can assist with creating an Oshima tsumugi tailor-made suit, sofa cover, or tapestry to take home.

In the evening head out on a wildlife viewing tour in search of natural monuments like the Amami rabbit and Otton frog.



◇ Oshima tsumugi is very suited to casual wear. It is fashionable clothing that can be worn in informal situations such as to a play or a music concert.

Day3

◇ Afternoon return flight.
◇ Highlight III: Mangrove canoeing, snorkeling with sea turtles, wild herb garden walk, among available options.

(Itineraries can be arranged according to request.)

◇ This is a commissioned tour. Itineraries can be customized to meet personal requests. Estimated price of model tour above includes travel expenses at the tour destination (including ground transportation on arrival at Amami Airport), two night's accommodation (hotel suite - breakfast, lunch, dinner included), kimono dressing experience, Oshima tsumugi fabric, designer consultation, production fee, nighttime wildlife viewing tour, tour guide-interpreter. Round-trip private jet charter/airline fares from Haneda Airport not included. For more information please contact us at Infinity Mugen <https://www.infinitymugen.com/>

◇ Planning and Sales: Regional Revitalization and Inbound Tourism Council <https://www.inbound-council.com/> / Infinity Project Team
Participating travel agencies: ANA X Inc., Japanissimo Co., Ltd., SKYTREK Inc., World Air-Sea Service Co., Ltd., Takamatsu-Shoun Co., Ltd.